

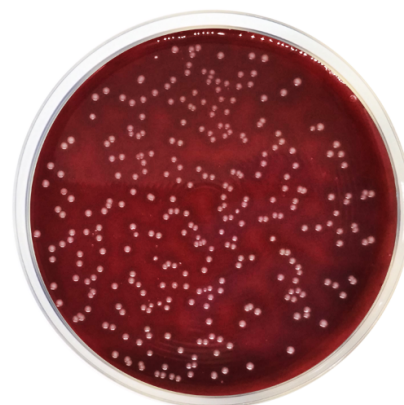
## Columbia Agar Base EP/USP/ISO

N° Cat: 1104

N° Batch: 209211

Re-test Date: 9/2025

Regulations: USP / ISO 10272 / ISO 11133 / European Pharmacopoeia



### Formula in g/l

Bacteriological agar	13,5	Maize starch	1
Pancreatic digest of casein	10	Sodium chloride	5
Yeast extract	5	Meat peptic digest	5
Heart pancreatic digest	3		

Typical formula g/L \* Adjusted and/or supplemented as required to meet performance criteria.

### Quality control

Solubility	Appearance	Color of the dehydrated medium	Color of the prepared medium	Final pH (25°)	Batch pH
w/o rests	Fine powder	Beige	Cherry red opaque	7,3±0,2	7,2

### Microbiological test

According to European Pharmacopoeia; *Clostridium sporogenes*:  
Incubation conditions: (30-35 °C, anaerobic conditions / 48-72 h).  
Inoculation conditions: (<=100 CFU).

According to ISO 10272; *Campylobacter jejuni*, *Campylobacter coli*:  
Incubation conditions: Productivity qualitative (41,5±1 °C, microaerobic atmosphere / 24-48 h).  
Inoculation conditions: (10<sup>3</sup>-10<sup>4</sup> CFU).  
Reference media: Media bathch Blood Agar already validated.

Rest of strains; *Neisseria meningitidis*, *Streptococcus pyogenes*, *Staphylococcus aureus*, *Streptococcus pneumoniae*:  
Incubation conditions: (35±2 °C, 5-10% CO<sub>2</sub> atmosphere / 48 h).

Microorganisms	Specification	Characteristic reaction
<i>Clostridium sporogenes</i> ATCC 11437	Good growth	
<i>Neisseria meningitidis</i> ATCC 13090	Good growth	
<i>Streptococcus pyogenes</i> ATCC 19615	Good growth	Beta hemolysis
<i>Staphylococcus aureus</i> ATCC 25923	Good growth	Beta/Gamma hemolysis
<i>Campylobacter jejuni</i> ATCC 29428	Good growth	
<i>Campylobacter jejuni</i> ATCC 33291	Good growth	
<i>Campylobacter coli</i> ATCC 43478	Good growth	
<i>Streptococcus pneumoniae</i> ATCC 6305	Good growth	

This certificate is an electronic copy of the certificate available in our laboratory and does not require signature.